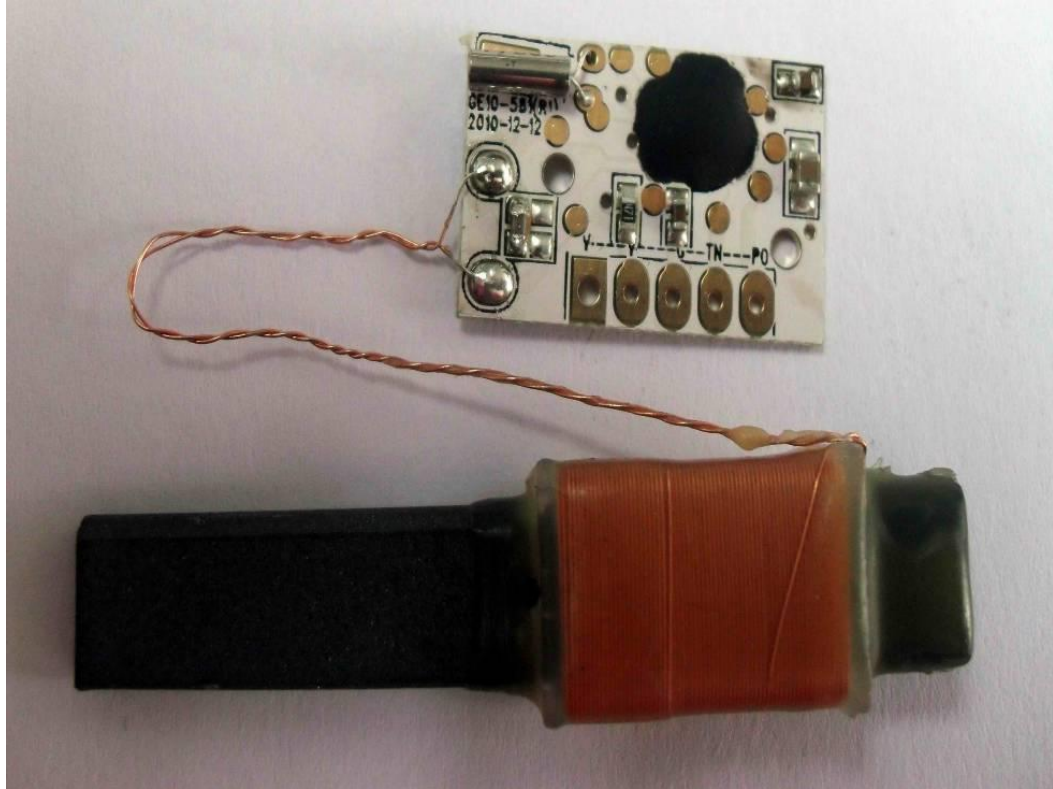


# GREENCHIP TECHNOLOGY CO.LTD.

## 3.8.50- DCF RCC Receiver Module Specification

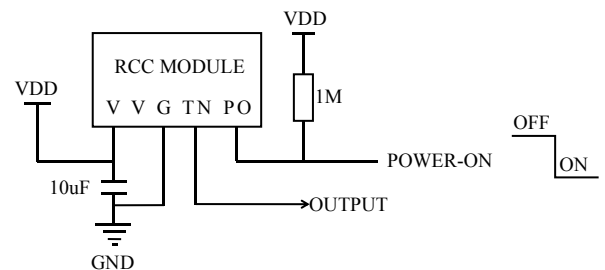
Radio Controlled Clock  
Receiver DCF Module



### Pin Description

V	VDD (3.0V)
V	VDD (3.0V)
G	GND
TN	OUTPUT (Time signal inverted output)
PO	POWER-ON (Module enable, low level enable)

### Reference Circuit



\*This module is for signal receive only, time signal decoding and display drive need MCU processing.

# GREENCHIP TECHNOLOGY CO.LTD.

---

## 3.8.50- DCF RCC Receiver Module Specification

---

### 1. FEATURES

- .Very high sensitivity
- .Power supply controllable
- .Low power consumption
- .Operating voltage range: 1.2 to 5.0V;
- .Rated operational voltage: 3.0V;
- .Working current: 70uA—90uA      Quiescent current: 1uA—3uA

### 2. SPECIFICATION

MSF 77.5 KHZ      (DCF):

Sensitivity: 30dBuV

Antenna size: **3X8X50mm**

### 3. Application Description

- a、 Antenna needs to be placed horizontally
- b、 Antenna can not near to metal and the change line of AC voltage, and keep it away from appliance equipment, it will disturb RCC receiving signal.
- c、 Antenna should keep a distance from MCU at least 60mm or above, and it can not have big current circuit change, avoiding its own line interference.
- d、 The working voltage VDD should be stable, ripple $\leq$  10mV(filter capacitor can be added to improve).